

Convex Detection Mirrors

Cleaning Instructions

Dusting... Dust with a soft, damp cloth, wiping gently.

Washing... Wash with mild soap or plain water.
 Use soft cloth or tissue

Polishing... Recommended P123[®] Cleaner Polisher.

**DO NOT USE WINDOW CLEANING FLUIDS,
 GRITTY CLOTHS,
 OR ANY STRONG CHEMICALS.**

Convex Detection Mirrors

are designed for use in retail stores to prevent pilferage and in industrial plants to prevent inter-section accidents.

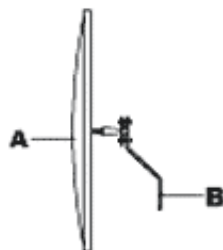
Other Uses

- Warehouses
- Hospitals
- Factories
- Loading Platforms
- Schools
- Churches
- Museums
- Office Buildings

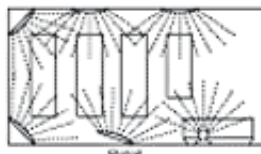


FOR 12" AND 18" MIRRORS

1. Attach Offset Bracket B to Wall or Post
2. Attach Mirror A to Bracket B, and Adjust Angle
3. Tighten Screws on Ball Bracket to Fix Mirror in Desired Position



Detection mirrors placed at strategic locations throughout the store can give management a clean view of out-of-the-way areas that are a temptation to thieves. For the best results we suggest one mirror for every two aisles.



- **Convex Detection Mirrors** are easy to install. Mounted simply and easily with the brackets provided in the container. The mirrors are equipped with a patented swivel assembly - adjustable to any position or angle
- **Wide Angle Vision** permits you to see around blind corners, over center aisle gondolas, and into hidden corners.
- **Discourage Shoplifters** who need privacy before they risk a theft. Considered the greatest psychological deterrent by detective agencies, and endorsed by leading chain and department stores.
- **They are on Duty** every minute of the day, and pay for themselves many times over in merchandise saved.